




TECHNICAL DATA SHEET

BEKINA® BOOTS Litefield®

BEKINA® BOOTS

Size range	
• EU	36 - 47
• UK	3,5 - 12
• US	4 - 14
The testresults in this technical datasheet are performed on size EU 42, UK 8, US 9	
Weight / pair	
• Non-safety	± 1 420 g
Colour	
	
petrol - brown	

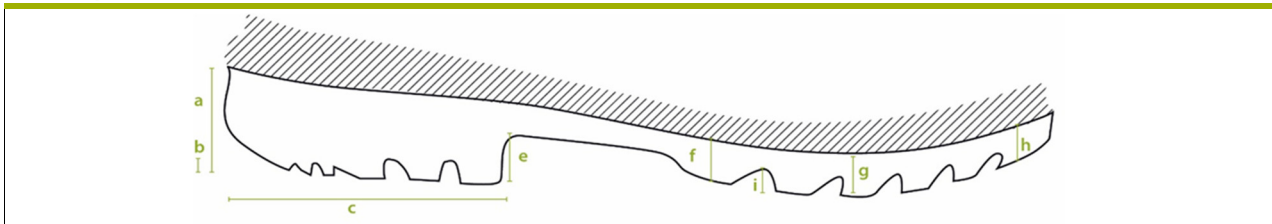
Upper

A. Dimensions		
• Height	outer measure: 42,5 cm	
• Foot length	outer measure: 29,5 cm	
	inner measure: 28,1 cm	
B. Thickness		
• Upper edge	2,1 - 2,4 mm	
• Calf	2,5 - 2,8 mm	
• Shinbone	2,2 - 3,0 mm	
• Ankle	2,4 - 3,5 mm	
• Heel	2,6 - 4,6 mm	
C. Raw material		
	NEOTANE® (proprietary polyurethane compound)	
D. Density		
	0,65 - 0,70 g/ml	
E. Tensile strength		
(incl. lining)	10 ± 2 N/mm ²	
F. Elongation		
(incl. lining)	600 ± 100 %	
G. Hardness		
	43 ± 2 Sh A	
H. Tear strength		
(incl. lining)	10 ± 2 N/mm	
I. Aging		
(incl. lining)	7 days at 70°	14 days at 70°
• Tensile strength	11,6 MPa	9,0 MPa
• Elongation	580 ± 20 %	600 ± 20 %
• Tear strength	11,4 N/mm	9,0 N/mm
J. Chemical resistance		
	see detailed list	

K. Environmental temperature	
• Maximum	± 100 °C
• Minimum	Cold insulation down to - 20 °C


Lining

A. Material	
	PU coating on polyester fabric
B. Seams	
	knitted seams

Outsole profile


A. Dimensions		
• Heel		
• Thickness	(a)	24,0 mm
• Profile depth	(b)	7,8 mm
• Length	(c)	84,3 mm
• Width		73,7 mm
• Middle foot		
• Height	(e)	14,5 mm
• Ladder anti-slip grips		2,6 mm
• Sole		
• Thickness	(f)	18,8 mm
	(g)	13,0 mm
	(h)	13,0 mm
• Profile depth	(i)	5,9 mm
B. Raw material		
	NEOTANE® (proprietary polyurethane compound)	
C. Density		
	0,65 - 0,70 g/ml	
D. Mechanical characteristics		
	see upper (E) - (F) - (H)	
E. Energy absorption of the seat region		
	20 J (requirement ≥ 20 J)	
F. Antistatic footwear		
	dry: 8×10^8 Ohm	
	wet: 1×10^7 Ohm	
G. Abrasion resistance		
	50 mm ³	
H. Hardness		
	60 ± 10 Sh A	
I. Chemical resistance		
	see enclosed list	

Accessories

Insole		
Three layers		
• Toplayer	woven textile	
• Colour	green	
• Thickness	0,7 mm	
• Interlayer	needle-felt	
• Colour	cyan blue	
• Thickness	3,0 mm	
• Bottom	gel latex	
• Colour	black	
• Thickness	1,0 mm	
Washable at 30°C		